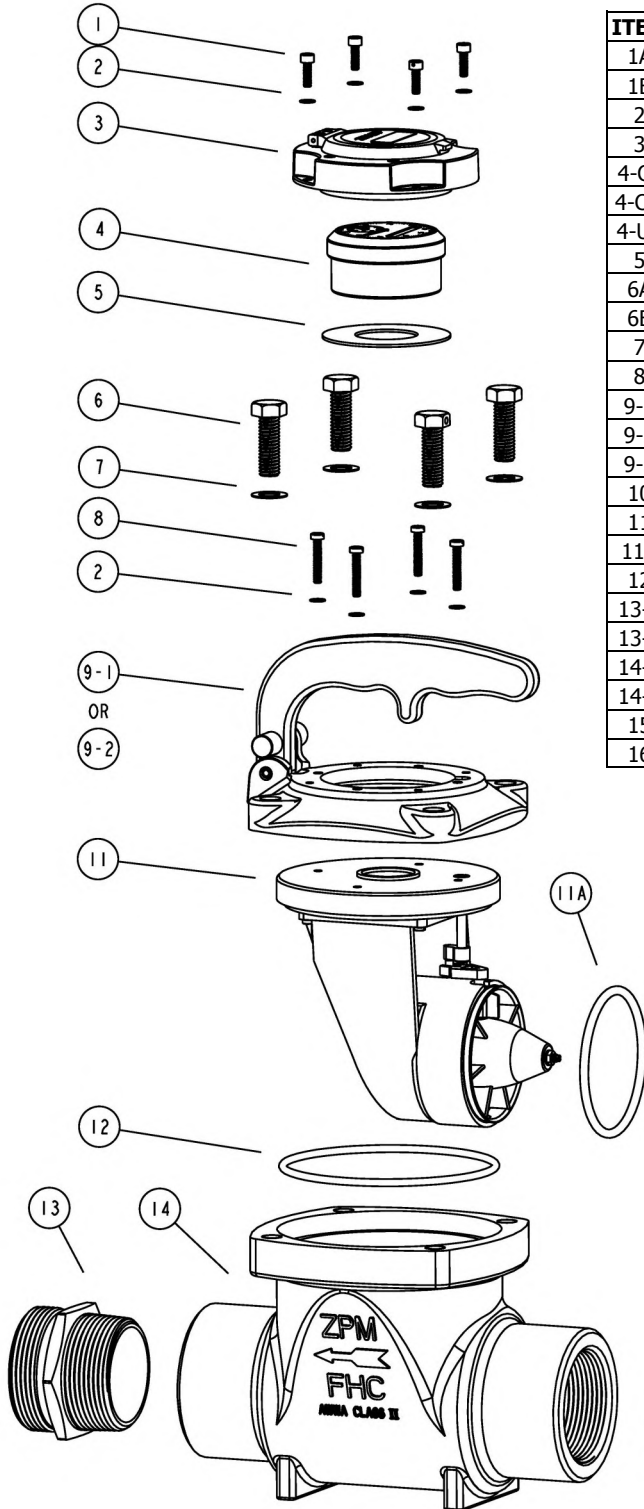
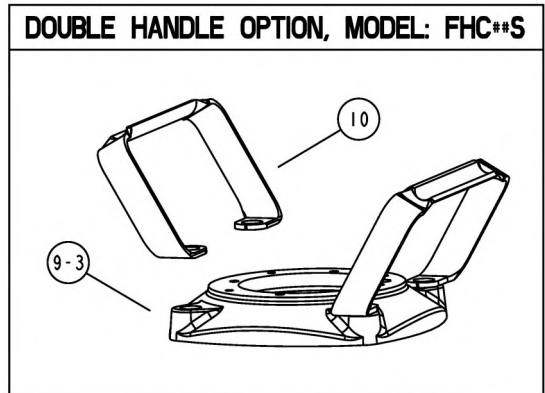


ZENNER California Fire Hydrant Meters

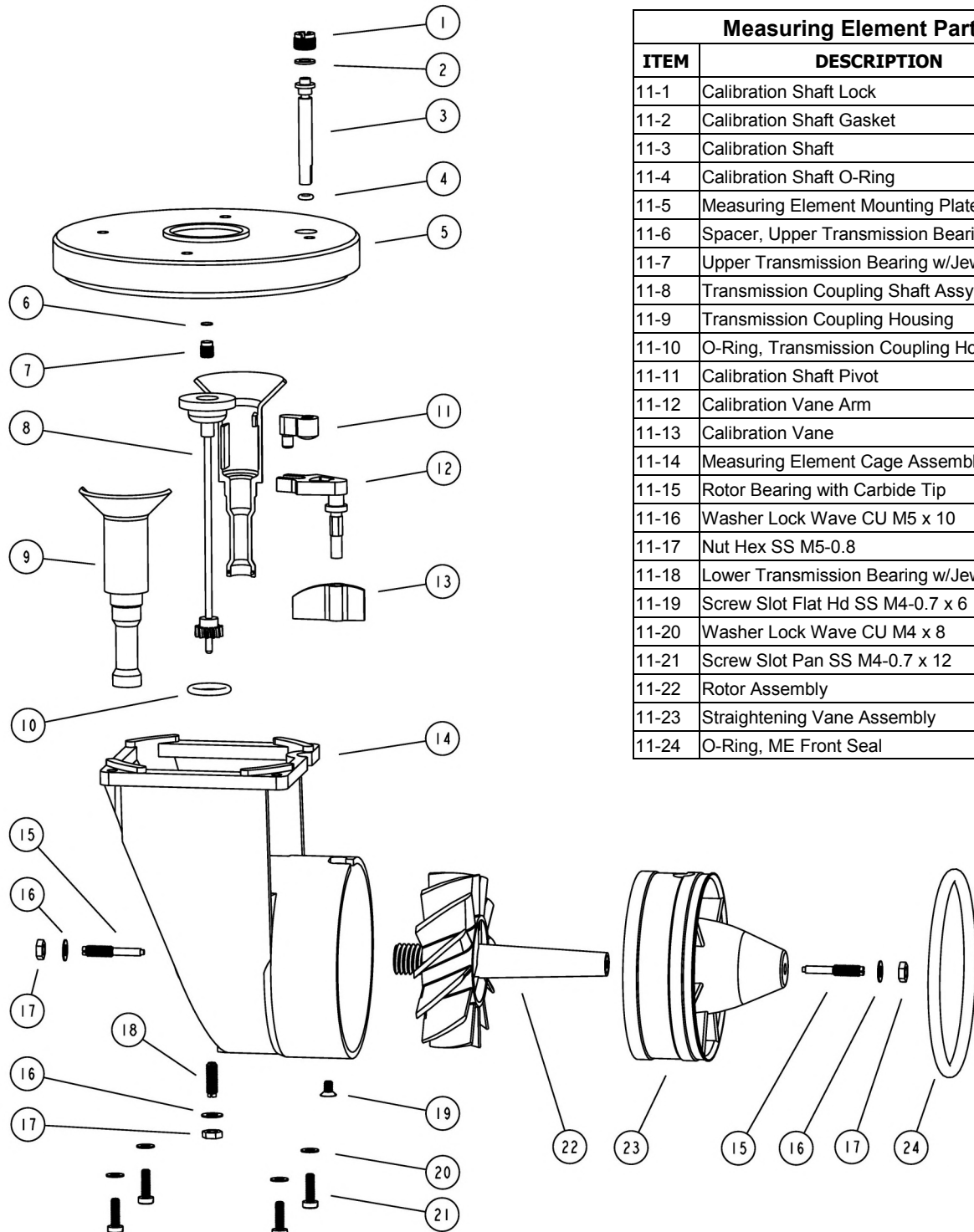
Parts List for Models FHC20, FHC25 (Size 3")



| ITEM | PART NUMBER | DESCRIPTION | QTY |
|------|----------------|--|-----|
| 1A | .05C10CCSS | Screw Skt Cap SS M5-0.8 x 10 | 3 |
| 1B | .05C10CCSS-DH | Screw Skt Cap SS M5-0.8 x 10 w/DH | 1 |
| 2 | .05N10WLWC | Washer Lock Wave CU M5 x 10 | 8 |
| 3 | PMT-CVRA-B | Cover Retaining Ring and Lid, Brass | 1 |
| 4-CF | FHM03-REG-CF | Register, 3" Turbine, Cubic Feet | 1 |
| 4-CM | PMT03-REG-CM | Register, 3" Turbine, Cubic Meters | 1 |
| 4-US | FHM03-REG-US | Register, 3" Turbine, U.S.Gallon | 1 |
| 5 | PMT-MBR | Magnet Barrier Ring | 1 |
| 6A | 50C175HCSS | Bolt Hex Cap SS 1/2-13 x 1.75 | 3 |
| 6B | 50C175HCSS-DH | Bolt Hex Cap SS 1/2-13 x 1.75 w/DH | 1 |
| 7 | AN960-C816 | Washer Flat SS .515 ID x .875 OD | 4 |
| 8 | .05C30MSPS | Screw Slot Pan SS M5-0.8 x 28 | 4 |
| 9-1 | FHM-CVRPL-SB | Cover Plate Assy, Barrel Lock (FHC##B) | 1 |
| 9-2 | FHM-CVRPL-SP | Cover Plate Assy, Padlock (FHC##P) | 1 |
| 9-3 | FHM-CVRPL | Cover Plate, Flat (FHC##S or FHC##N) | 1 |
| 10 | FHM-HNDL-DS | FHM Double Handle, SS | 2 |
| 11 | PMT03-MEA | Turbine Meter Measuring Element, 3" | 1 |
| 11A | PMT03-ME-FSOR | PMT03 MEA Front Seal O-Ring | 1 |
| 12 | PMT03-ORING-ME | O-Ring for Measuring Element | 1 |
| 13-1 | NP2520B | Nipple 2.5"NH x 2"MIP Brass (FHC20#) | 1 |
| 13-2 | NP2525B | Nipple 2.5"NH x 2.5"MIP Brass (FHC25#) | 1 |
| 14-1 | FHC-HSG-2520 | FHC Meter Housing 2.5"FIP x 2"FIP | 1 |
| 14-2 | FHC-HSG-2525R | FHC Housing 2.5"FIP x 2.5"FIP | 1 |
| 15 | SW2525B-STR | Swivel 2.5"SW x 2.5"MIP Brass w/Strainer | 1 |
| 16 | SWG25-187 | Swivel Gasket for 2-1/2" FHM Swivel | 1 |



ZENNER California Fire Hydrant Meters Parts List for Models FHC20, FHC25 (Size 3")



| Measuring Element Parts List | | |
|------------------------------|---------------------------------------|-----|
| ITEM | DESCRIPTION | QTY |
| 11-1 | Calibration Shaft Lock | 1 |
| 11-2 | Calibration Shaft Gasket | 1 |
| 11-3 | Calibration Shaft | 1 |
| 11-4 | Calibration Shaft O-Ring | 1 |
| 11-5 | Measuring Element Mounting Plate | 1 |
| 11-6 | Spacer, Upper Transmission Bearing | 1 |
| 11-7 | Upper Transmission Bearing w/Jewel | 1 |
| 11-8 | Transmission Coupling Shaft Assy | 1 |
| 11-9 | Transmission Coupling Housing | 2 |
| 11-10 | O-Ring, Transmission Coupling Housing | 1 |
| 11-11 | Calibration Shaft Pivot | 1 |
| 11-12 | Calibration Vane Arm | 1 |
| 11-13 | Calibration Vane | 1 |
| 11-14 | Measuring Element Cage Assembly | 1 |
| 11-15 | Rotor Bearing with Carbide Tip | 2 |
| 11-16 | Washer Lock Wave CU M5 x 10 | 3 |
| 11-17 | Nut Hex SS M5-0.8 | 3 |
| 11-18 | Lower Transmission Bearing w/Jewel | 1 |
| 11-19 | Screw Slot Flat Hd SS M4-0.7 x 6 | 1 |
| 11-20 | Washer Lock Wave CU M4 x 8 | 4 |
| 11-21 | Screw Slot Pan SS M4-0.7 x 12 | 4 |
| 11-22 | Rotor Assembly | 1 |
| 11-23 | Straightening Vane Assembly | 1 |
| 11-24 | O-Ring, ME Front Seal | 1 |