

ZENNER High Flow Fire Hydrant Meters 4" Model FHZH

INTRODUCTION: ZENNER High Flow Hydrant Meters are light weight portable units. They are designed to measure a wide variety of cold potable water flows from fire hydrants where flows are in one direction. These water meters have a 4" turbine measuring element for use in applications where high flows are expected.

OPERATION: Water flows through the turbine section causing the rotor to turn proportionately to the quantity of water flowing through the meter. A drive magnet transmits the motion of the rotor to a driven magnet located within the hermetically sealed register. The magnet is connected to a gear train which translates the rotations into volume totalization displayed on the register dial face. The only moving parts in the meter are the rotor assembly and vertical shaft .

CONSTRUCTION: ZENNER High Flow Hydrant Meters consist of several basic components: light weight aluminum main case, turbine type measuring element assembly, sealed register, aluminum cover plate, stainless steel hardware, brass lid assembly, aluminum or brass swivel and nipple, aluminum or stainless steel handles, etc. The measuring element assembly includes the rotor assembly, vertical shaft and a calibration vane which eliminates the need for calibration change gears.

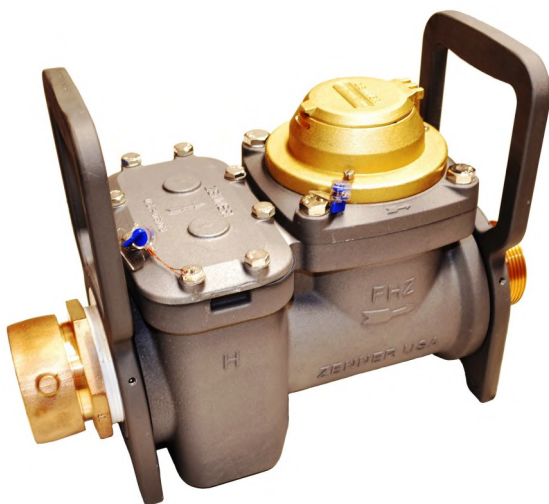
MAINTENANCE: ZENNER High Flow Hydrant Meters are engineered and manufactured to provide long term service and operate virtually maintenance free. If maintenance is necessary the measuring element can be removed from the main case.

CONFORMANCE: ZENNER High Flow Hydrant Meters are tested and comply with AWWA C701 Class II performance standards.

STRAINERS: ZENNER High Flow Hydrant Meters come standard with a large built-in 54 square inch strainer.

CONNECTIONS: ZENNER High Flow Hydrant Meter Model FHZH30 is typically configured with bronze connections, although aluminum connections are available. The FHZH40 and FHZH45 Models are typically configured with aluminum connections, although brass connections are available.

OPTIONS: Gate Valves, locking devices, special order connections, aluminum double handles, stainless steel double handles and locking single handles.



FHZH30D**



FHZH40S**

MODEL		FHZH30	FHZH40 FHZH45
SIZE		4"	4"
Flow Rate Maximum Intermittent	USGPM	1200	1200
Maximum Continuous	USGPM	1000	1000
Optimum Operating Flow Range	USGPM	6 - 1000	6 - 1000
Low Flow rate	USGPM	5	5
Maximum Working Pressure	P.S.I.	150	150
Maximum Temperature	Deg. F	140	140
Length	Inches	17	20
Length with Gate Valve	Inches	23 3" GV	
Weight	Pounds	29	26
Weight with Gate Valve	Pounds	39	



**Large Built-in
Z-Plate Strainer**

FHH Model Configurations

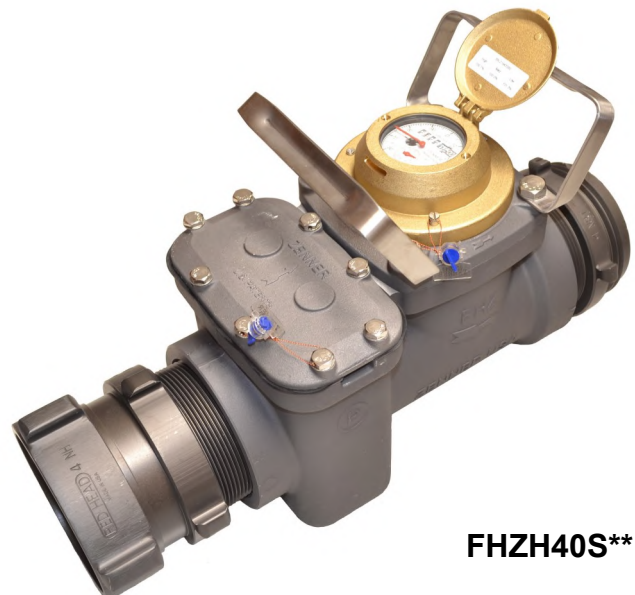
- 1) FHZH30: 2.5" Swivel x 2.5" Nipple; Meter Housing 3" FIPT both ends
- 2) FHZH40: 4" Swivel x 4" Nipple; Meter Housing 4" FIPT both ends
- 3) FHZH45: 4.5" Swivel x 4" Nipple; Meter Housing 4" FIPT both ends

FHH Handle Options:

- 1) FHZH30D: Double Handles, Aluminum
- 2) FHZH##S: Double Handles, Stainless Steel, Strap
- 3) FHZH##P: Single Handle, Padlock
- 4) FHZH##B: Single Handle, Barrel Lock
- 5) FHZH##N: No Handles



FHZH40B**



FHZH40S**