

ZENNER Bronze Turbine Meters

Model ZTMB

Sizes 1-1/2", 2", 3", 4", 6", and 8"

INTRODUCTION: ZENNER Bronze Turbine Meters are designed for applications where flows are usually moderate to high and occasionally low. They are to be used in measurement of potable cold water in commercial and industrial services where flows are in one direction.

OPERATION: Water flows through the turbine section which causes the rotor to turn proportionately to the quantity of water flowing through the meter. A drive magnet transmits the motion of the rotor to a driven magnet located within the hermetically sealed register. The magnet is connected to a gear train which translates the rotations into volume totalization displayed on the register dial face. The only moving parts in the water are the rotor assembly and vertical shaft .

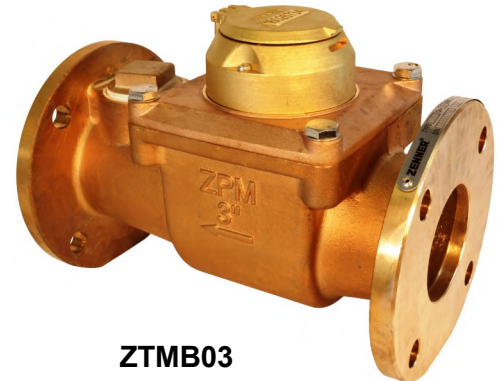
CONSTRUCTION: ZENNER Bronze Turbine Meters consist of four basic components: bronze main case, bronze cover plate, measuring element, and a sealed register. The main case is made of bronze with round flanges, except for the 1-1/2" and 2" meters which have oval flanges. The measuring element assembly includes the rotor assembly, vertical shaft and a calibration vane which eliminates the need for calibration change gears. The 1-1/2" bronze turbine meter has a built-in stainless steel strainer.

MAINTENANCE: ZENNER Bronze Turbine Meters are engineered and manufactured to provide long-term service and operate virtually maintenance free. If maintenance is necessary, the universal measuring element (UME) can be removed from the main case. Interchangeability of certain parts between like sized meters minimizes spare parts inventory. A built-in test port makes it possible to field test installed meters.

CONFORMANCE: ZENNER Bronze Turbine Meters are tested and comply with AWWA C701 Class II performance standards. These Meters comply with the lead-free provisions of the Safe Drinking Water Act and are certified to NSF/ANSI Standards 61 and 372.

STRAINERS: ZENNER recommends the use of a separate strainer upstream from the turbine meter. Strainers reduce the chance of damage to the rotor as well as the frequency in which it must be removed for inspection. The lack of a strainer may void the warranty of the turbine meter. Note that the 1-1/2" bronze turbine meter has a built-in strainer

CONNECTIONS: Companion flanges for installation of meters on various pipe types and sizes are available in bronze or cast iron.



ZTMB03

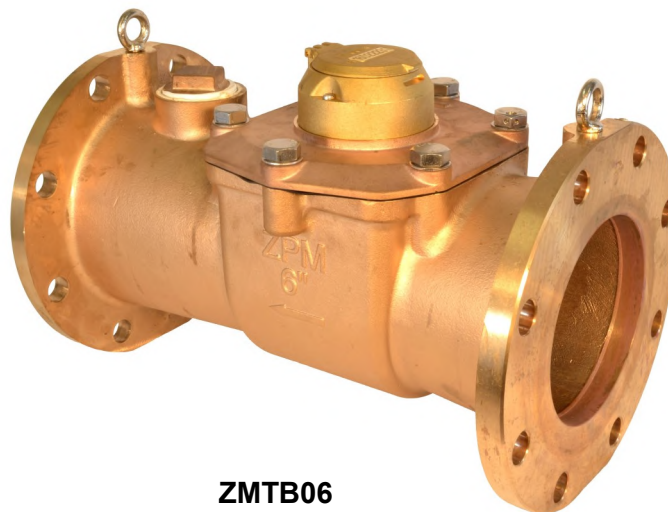


ZTMB01

ZENNER USA

15280 Addison Rd #240, Addison, TX 75001
Phone (972) 386-6611, Fax (972) 386-1814
www.zennerusa.com

MODEL		ZTMB01	ZTMB02	ZTMB03	ZTMB04	ZTMB06	ZTMB08
SIZE		1 1/2"	2"	3"	4"	6"	8"
Flow Rate Maximum Intermittent	USGPM	250	400	550	1250	2500	4500
Maximum Continuous	USGPM	160	200	450	1000	2000	3500
Optimum Operating Flow Range	USGPM	3 - 160	3 - 200	5 - 550	10 - 1250	20 - 2500	30 - 4500
Low Flow Rate	USGPM	2	2	2-1/2	5	12	20
Start-Up Flow Rate	USGPM	7/8	7/8	1-1/8	1-3/8	7-1/2	8
Maximum Working Pressure	P.S.I.	150	150	150	150	150	150
Maximum Temperature	Deg. F	150	150	150	150	150	150
Length	Inches	13	10	12	14	18	20
Height	Inches	7-1/4	7-1/4	9-1/2	10-1/4	11-1/2	14-1/2
Width	Inches	6	6	7-1/2	9	11	13-1/2
Weight	Pounds	25	18	38	50	112	170
Number of Holes per Flange		2	2	4	8	8	8



ZMTB06