

## ZENNER Bronze Compound Meters

Model PMCB

Sizes 2", 3", 4", 6", and 8"

**INTRODUCTION:** ZENNER Bronze Compound Meters are designed for applications where flows are usually medium and high but can occasionally be low. They are for use in measurement of potable cold water in commercial and industrial services where flows are in one direction.

**OPERATION:** ZENNER Bronze Compound Meters utilize a turbine type meter on the main flow line and a proportionately sized meter on the low flow/bypass line. A change over valve controls the flow of water through the appropriate measuring device. Before the valve opens, all water flows through the low flow meter. As pressure rises the valve opens, allowing water to flow through both meters. Movement of the measuring elements are transmitted to drive magnets, which transmit the motion to driven magnets located within hermetically sealed registers. The magnets are connected to gear trains, which translate the rotations into volume totalization displayed on the register dial faces.

**CONSTRUCTION:** ZENNER Bronze Compound Meters consist of a main case, turbine measuring element, changeover valve housing, main case cover, multi-jet type meter, and magnetically driven register assemblies. The main case, changeover housing and bypass meter are cast in C89833 bronze. The measuring element assembly includes the rotor assembly, vertical shaft and a calibration vane which eliminates the need for calibration change gears.

**MAINTENANCE:** ZENNER Bronze Compound Meters are engineered and manufactured to provide long-term service and operate virtually maintenance free. If necessary the universal measuring element (UME) can be removed from the main case for maintenance. Interchangeability of certain parts between like sized meters minimizes spare parts inventory.

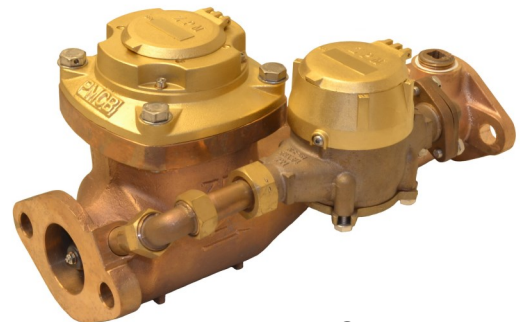
**CONFORMANCE:** ZENNER Bronze Compound Meters are tested and comply with AWWA C702 performance standards. These Bronze Compound Meters comply with the lead-free provisions of the Safe Drinking Water Act and are certified to NSF/ANSI Standard 372.

**STRAINERS:** ZENNER recommends the use of a separate strainer upstream from the turbine meter. Strainers reduce the chance of damage to the rotor as well as the frequency in which it must be removed for inspection. The lack of a strainer may void the warranty of the turbine meter. Note that ZENNER Bronze Compound Meters do not come with a strainer.

**CONNECTIONS:** Companion flanges for installation of meters on various pipe types and sizes are available in bronze or cast iron.



**PMCB04**  
**4 X 3/4**



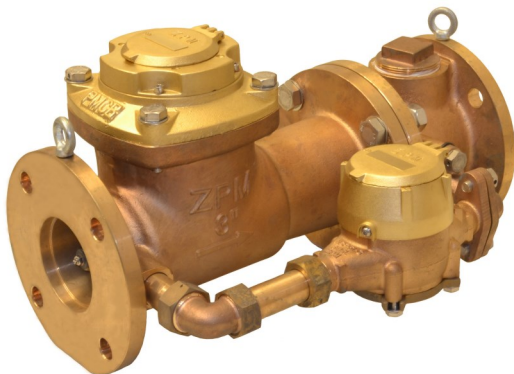
**PMCB02**  
**2 X 5/8**

### ZENNER USA

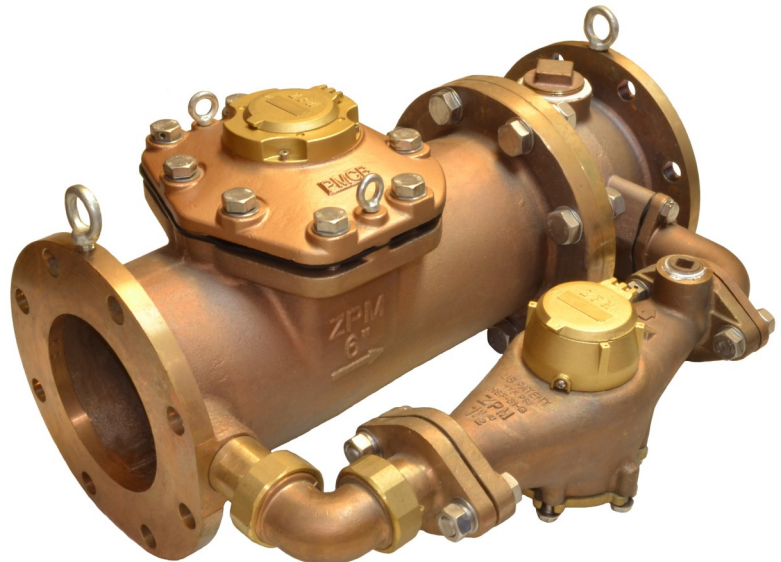
15280 Addison Rd #240, Addison, TX 75001  
Phone (972) 386-6611, Fax (972) 386-1814  
www.zennerusa.com

MODEL		PMCB02	PMCB03	PMCB04	PMCB06	PMCB08*
SIZE		2 X 5/8	3 X 3/4	4 X 3/4	6 X 1-1/2	8 X 2
Flow Rate Maximum Intermittent	USGPM	400	550	1250	2500	3600
Maximum Continuous	USGPM	200	450	1000	2000	2800
Optimum Operating Flow Range	USGPM	2 - 200	4 - 320	6 - 500	10 - 1000	16 - 1600
Low Flow Rate	USGPM	1/4	1/2	3/4	1-1/2	2
Start-Up Flow Rate	USGPM	1/16	1/8	1/8	1/2	3/4
Maximum Working Pressure	P.S.I.	160	160	160	160	160
Maximum Temperature	Deg. F	140	140	140	140	140
Length	Inches	17	17	20	24	55-1/4
Height	Inches	9-1/2	10-1/4	11	12-7/8	14-1/4
Width	Inches	11	12	15	18	23
Weight	Pounds	39	68	95	195	
Number of Holes per Flange		2	4	8	8	8

\*NOTE: PMCB-08 Includes Bronze Strainer. Check valve and spool are Epoxy coated cast iron



**PMCB03**  
**3 X 3/4**



**PMCB06**  
**6 X 1-1/2**