

ZENNER Sportster Fire Hydrant Meters 3" Model FHS

INTRODUCTION: Sportster Hydrant Meters are designed to measure a wide variety of cold potable water flows from fire hydrants where flows are in one direction. These Hydrant Meters are light weight portable units designed for temporary installations.

OPERATION: Water flows through the turbine section causing the rotor to turn proportionately to the quantity of water flowing through the meter. A drive magnet transmits the motion of the rotor to a driven magnet located within the hermetically sealed register. The magnet is connected to a gear train which translates the rotations into volume totalization displayed on the register dial face. The only moving parts in the meter are the rotor assembly and vertical shaft .

CONSTRUCTION: Sportster Hydrant Meters consist of several basic components: light weight aluminum main case, aluminum cover plate, turbine type measuring element assembly, sealed register, stainless steel hardware, brass lid assembly, stainless steel handles, brass swivel and brass nipple. The measuring element assembly includes the rotor assembly, vertical shaft and a calibration vane which eliminates the need for calibration change gears.

MAINTENANCE: Sportster Hydrant Meters are engineered and manufactured to provide long-term service and operate virtually maintenance free. If maintenance is necessary the measuring element can be removed from the main case.

CONFORMANCE: Sportster Hydrant Meters are tested and comply with AWWA C701 Class II performance standards.

STRAINERS: Sportster Hydrant Meters come with an inlet strainer built into the Swivel.

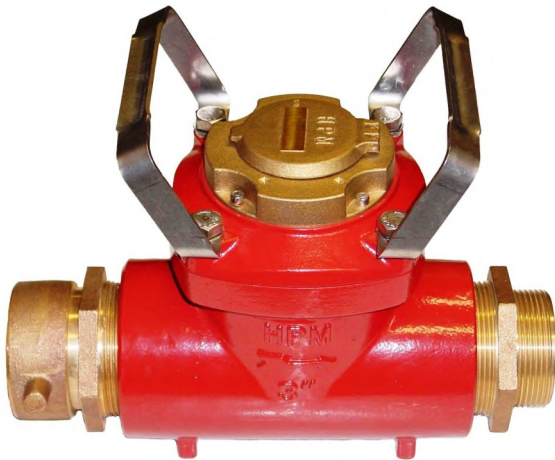
OPTIONS: Gate Valves, check valves, reduced pressure Backflow Preventers, locking devices, special order connections, "add-on" restrictor plates and stands.



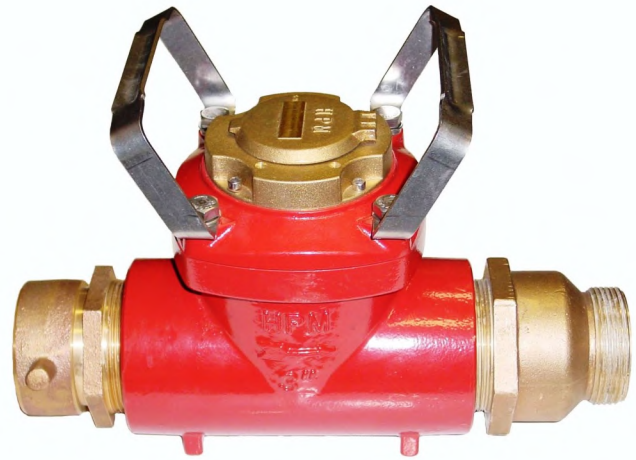
FHS30S**



MODEL		FHS30S**	FHS30S**-CV
SIZE		3"	3"
Flow Rate Maximum Intermittent	USGPM	600	500
Maximum Continuous	USGPM	500	400
Optimum Operating Flow Range	USGPM	3 - 350	3 - 350
Low Flow Rate	USGPM	2-1/2	2-1/2
Maximum Working Pressure	P.S.I.	150	150
Maximum Temperature	Deg. F	140	140
Length	Inches	14	16
Weight	Pounds	22	25



FHS30S**
 Shown with Standard 2-1/2" Inlet Swivel and 2-1/2" Outlet Nipple



FHS30S-CV**
 Shown with Standard 2-1/2" Inlet Swivel and 2-1/2" Outlet Nipple with Built-in Check Valve