

ZENNER Compound Meters

Model PMC

Sizes 3", 4", 6" and 8" (Custom 10" and 12")

INTRODUCTION: ZENNER Compound Meters are designed for applications where flows are usually medium and high but can occasionally be low. They are for use in measurement of potable cold water in commercial and industrial services where flows are in one direction.

OPERATION: ZENNER Compound Meters utilize a turbine type meter on the main flow line and a proportionately sized meter on the low flow/bypass line. A change over valve controls the flow of water through the appropriate measuring device. Before the valve opens, all water flows through a low flow meter. As pressure rises the valve opens, water flows through both meters. Movement of the measuring elements are transmitted to drive magnets which transmit the motion to driven magnets located within hermetically sealed registers. The magnets are connected to gear trains which translate the rotations into volume totalization displayed on the register dial faces.

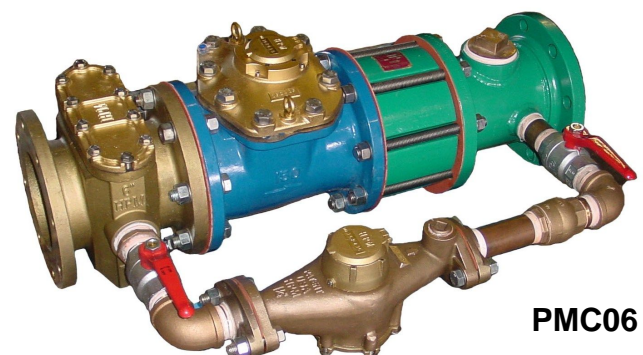
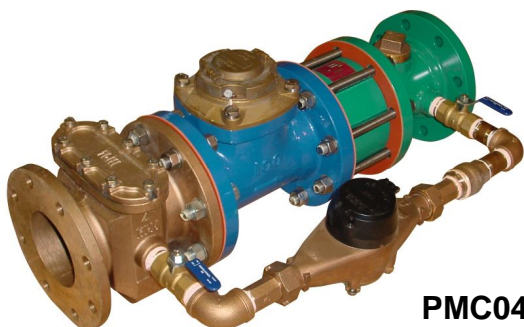
CONSTRUCTION: ZENNER Compound Meters consist of a Turbine Meter (PMT), proportionately sized meter on the low flow/bypass line, bronze strainer, changeover valve, bypass shut-off valves and outlet spool with test port.

MAINTENANCE: ZENNER Compound Meters are engineered and manufactured to provide long-term service and operate virtually maintenance free. The ZENNER Turbine Meter can easily be maintained without removing the meter from the compound meter assembly, by simply removing the unitized measuring element and register assembly. The smaller meter on the low flow line has its own shut-off valve which allows temporary isolation of the meter and check valve being worked on, while water can continue to flow through the turbine meter.

CONFORMANCE: ZENNER Compound Meters are tested and comply with AWWA C702 performance standards. These Compound Meters comply with the lead-free provisions of the Safe Drinking Water Act and are certified to NSF/ANSI Standard 372.

STRAINERS: ZENNER Compound Meters come standard with built-in Bronze Strainer, unless otherwise specified.

CONNECTIONS: Companion flanges for installation of meters on various pipe types and sizes are available.



ZENNER USA

15280 Addison Rd #100, Addison, TX 75001, (972) 386-6611, Fax (972) 386-1814
www.zennerusa.com



All that counts.

MODEL		PMC03	PMC04	PMC06	PMC08
SIZE		3 X 3/4	4 X 1	6 X 1-1/2	8 X 2
Flow Rate Maximum Intermittent	USGPM	1000	1300	2800	3600
Maximum Continuous	USGPM	700	1000	2000	2800
Optimum Operating Flow Range	USGPM	4 - 320	6 - 500	10 - 1000	16 - 1600
Low Flow Rate	USGPM	1/2	3/4	1-1/2	2
Start-Up Flow Rate	USGPM	1/16	1/8	1/4	3/8
Maximum Working Pressure	P.S.I.	160	160	160	160
Maximum Temperature	Deg. F	140	140	140	140
Length	Inches	24	29	36-1/2	55-1/4
Height	Inches	11	11-1/2	13-3/4	14-7/8
Width	Inches	15	17	22	23
Weight	Pounds	100	108	190	300
Number of Holes per Flange		4	8	8	8

ZENNER USA

15280 Addison Rd #100, Addison, TX 75001, (972) 386-6611, Fax (972) 386-1814

www.zennerusa.com